



A PRODUCT OF HI-VAC CORPORATION

TRUCK ACCESSORIES



**117 Industry Road
Marietta, OH 45750
Phone: 740-374-2306
Fax: 740-374-5447
1-800-752-2400
Web: www.hi-vac.com
E mail: sales@hi-vac.com**

FLEXIBLE HOSE

ABRASION RESISTANT



Part Number	Inside Diameter	Approx. Outside	Vacuum Rating @	Rec. Min. Bend Radius	Standard Length	Weight per Foot
10-0196	4"	4.55"	25"	9"	50'	1.36#
10-0453	1"	5.65"	25"	10"	50'	2.08#
10-0454	6"	6.78"	25"	12"	50'	2.86#
10-0455	8"	8.87"	20"	17"	50'	4.23#

Recommended hose, especially as last piece closest to the nozzle. Excellent flexibility even at low temperatures. Good oil and abrasion resistance. Static dissipating composite rubber with PVC helix construction. Corrugated cover, smooth interior. Temp. range: -30° to 140° F. Up to 5" ID sold in 25' increments only. 6" & 8" ID sold per foot.

LIGHT WEIGHT RUBBER



Part Number	Inside Diameter	Approx. Outside	Vacuum Rating @	Rec. Min. Bend Radius	Standard Length	Weight per Foot
10-0008	4"	4.50"	Full	4½"	50'	2.0#
10-0176	5"	5.56"	Full	5½"	20'	2.8#
10-0151	6"	6.50"	22"	6½"	20'	3.3#

Better flexibility and abrasion resistance than plastic hose. Single wire reinforced. Resists weather and abrasion. Temp. range: -20° to 175° F. Sold in standard lengths only.

HEAVY DUTY RUBBER



Part Number	Inside Diameter	Approx. Outside	Vacuum Rating @	Rec. Min. Bend Radius	Standard Length	Weight per Foot
10-0086	4"	4.7"	Full	12"	25'	2.3#
10-0084	6"	6.8"	Full	18"	10' or 20'	1.6#
10-0085	8"	8.9"	Full	24"	10' or 25'	6.8#

Better abrasion resistance, but less flexibility, than light weight rubber hose. Double wire reinforced with soft cuffs on each end. Resists weather and abrasion. Temp. range: -20° to 175° F. Specify length when ordering.

STATIC CONDUCTING PVC



Part Number	Inside Diameter	Approx. Outside	Vacuum Rating @	Rec. Min. Bend Radius	Standard Length	Weight per Foot
U4703-0017	4"	4.72"	24"	10"	50' or 100'	1.93#
U4703-0033	5"	5.74"	24"	16"	20'/50'/60'	2.40#
U4705-0025	6"	6.81"	24"	18"	20'/50'/60'	3.70#

Clear, flexible, and abrasion resistant, this PVC hose features an embedded copper static wire for positive grounding. A rigid PVC spiral provides strength against collapse. Temp. range: -4° to 150° F. Sold in standard lengths only.

HIGH TEMPERATURE HOSE



Part Number	Inside Diameter	Approx. Outside	Vacuum Rating @	Rec. Min. Bend Radius	Standard Length	Weight per Foot
U4703-0015	4"	4.49"	29.92"	7.5"	20'	2.04#
TBA	4"	4.49"	29.92"	7.5"	25'	2.04#
TBA	4"	4.49"	29.92"	7.5"	50'	2.04#
U4705-0022	6"	6.49"	17"	12"	10'	3.50#
U4705-0023	6"	6.49"	17"	12"	20'	3.50#
TBA	6"	6.49"	17"	12"	25'	3.50#
TBA	6"	6.49"	17"	12"	50'	3.50#
U4707-0015	8"	8.72"	17"	16"	10'	5.50#
U4707-0025	8"	8.72"	17"	16"	20'	5.50#
TBA	8"	8.72"	17"	16"	25'	5.50#
TBA	8"	8.72"	17"	16"	50'	5.50#

This natural rubber hose is specially formulated with high temperature compounds to withstand 230° continuous (300° intermittent). Ideal for fly ash and other high temperature applications. Other features include static conductivity, abrasion resistance, wire and fabric reinforcement. The 3" through 6" are reinforced with flat wire spiral. The 8" hose is reinforced with a round spiral wire. Soft cuffs on each end of the hose. Temp. range: to 230° F continuous. Sold in standard lengths only.



ACCESSORIES

ALUMINUM VACUUM TUBES

AQUATECH STYLE

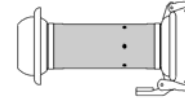
Intake (Crown) Tube



Extension Tube



Fluidizer Tube



LENGTH	4 INCH DIAMETER		6 INCH DIAMETER			8 INCH DIAMETER		
	INTAKE	EXTENSION	INTAKE	EXTENSION	FLUIDIZER	INTAKE	EXTENSION	FLUIDIZER
3 ft.		A150401	A150161	A150461	A240805		A238005	A240806
4 ft.	A150402	A380223	A150171	A150471		A238994	A241712	
5 ft.				A150475			A238006	
6 ft.	A150421	A380222	A150181	A150481		A241499	A238007	
8 ft.		A150124	A150186	A150485		A238010	A238008	
10 ft.			A150191	A150491		A239211	A238009	
20 ft.				A150511				
O-Ring	A190770		A190760			A191080		

BAND LOCK STYLE

Intake (Crown) Tube



Extension Tube



Fluidizer Tube



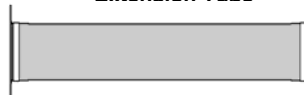
LENGTH	4 INCH DIAMETER		6 INCH DIAMETER			8 INCH DIAMETER		
	INTAKE	EXTENSION	INTAKE	EXTENSION	FLUIDIZER	INTAKE	EXTENSION	FLUIDIZER
3 ft.								A381796-1
4 ft.							A380154	
5 ft.								
6 ft.						A380156-SP	A380156	
8 ft.							A380155	
10 ft.		U4806-0003		U4806-0005			U4806-0007	
20 ft.		U4806-0012		U4806-0014			U4806-0016	
Gasket	U4805-0010		U4805-0012			A191502		
Clamp	URI04-0014		U4804-0016			A246391		

FLAT FLANGE STYLE

Intake (Crown) Tube



Extension Tube

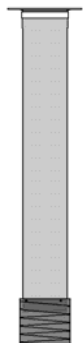


Fluidizer Tube



LENGTH	6 INCH DIAMETER			8 INCH DIAMETER			
	INTAKE	EXTENSION	FLUIDIZER	INTAKE	EXCAVATOR	EXTENSION	FLUIDIZER
3 ft.			A381847				A381844
4 ft.	A381846						
6 ft.				A381848		A381673	A381853
6' 10"				A381674	A382810		
7 ft.		A381845					
8 ft.						A381672	
Gasket	A381850			A191502			
Clamp	A381851			A246391			

Excavator Tube





ACCESSORIES

ADAPTERS	
8" Flat Flange Style Hose Shank	A381677
8" Female Aquatech to 8" Flat Flg. Adapter	A381998
8" Flat Flg. to 8" Male Aquatech Adapter	A171313
8" Female Aquatech to 8" Female Bandlock	A383272
8" Female Aquatech to 8" Male Bandlock	A382259

ALL ALUMINUM FLAT FLANGE			
8 INCH DIAMETER			
LENGTH	INTAKE	EXTENSION	FLUIDIZER
3 ft.		A249033	A249034
4 ft.		A249032-4	
5 ft.		A249032	
8 ft.		A249031	
Clamp	A381675		
Gasket	A249035		

HOSE COUPLERS



MALE COUPLER

Part Number	Size	Weight
4802-0037	3 in.	2.0 lbs.
4802-0038	4 in.	2.5 lbs.
4802-0040	6 in.	3.5 lbs.
4802-0042	8 in.	6.0 lbs.
4802-0043	10 in.	8.0 lbs.
4802-0044	12 in.	10.0 lbs.



FEMALE COUPLER

Part Number	Size	Weight
4802-0046	3 in.	2.0 lbs.
4802-0047	4 in.	2.5 lbs.
4802-0049	6 in.	4.0 lbs.
4802-0051	8 in.	8.0 lbs.
4802-0052	10 in.	10.5 lbs.
4802-0053	12 in.	14.0 lbs.



LOCKRING

Part Number	Size	Weight
4804-0013	3 in.	1.4 lbs.
4804-0014	4 in.	1.6 lbs.
4804-0016	6 in.	2.0 lbs.
4804-0018	8 in.	2.5 lbs.
4804-0019	10 in.	3.5 lbs.
4804-0020	12 in.	5.2 lbs.



GASKET

Part Number	Size	Weight
4805-0009	3 in.	0.15 lbs.
4805-0010	4 in.	0.20 lbs.
4805-0012	6 in.	0.30 lbs.
4805-0014	8 in.	0.40 lbs.
4805-0015	10 in.	0.50 lbs.
4805-0016	12 in.	0.60 lbs.

DUST CAPS



Part Number	Size
4803-0015	4 in.
4803-0016	6 in.
4803-0017	8 in.
4803-0018	10 in.

Dust caps fit into the female half of hose couplers and are secured in place with a lockring.



ACCESSORIES

HOSE COUPLER ASSEMBLIES



ASSEMBLY NAME	ITEM DESCRIPTION	QUANTITY	PART NUMBER
4" COUPLER ASSEMBLY	4 in. Male Coupler	1	4802-0038
	4 in. Female Coupler	1	4802-0047
	4 in. Lockring	1	4804-0014
	4 in. Gasket	1	4805-0010
6" COUPLER ASSEMBLY	6 in. Male Coupler	1	4802-0040
	6 in. Female Coupler	1	4802-0049
	6 in. Lockring	1	4804-0016
	6 in. Gasket	1	4805-0012
8" COUPLER ASSEMBLY	8 in. Male Coupler	1	4802-0042
	8 in. Female Coupler	1	4802-0051
	8 in. Lockring	1	4804-0018
	8 in. Gasket	1	4805-0014

COUPLERS & ADAPTERS



FEMALE TO MALE REDUCER

PART NO.	FEMALE	MALE	APPROX. WT.
A238213	8"	6"	12 #
A170220	6"	4"	9 #
A170210	4"	3"	7 #
A170200	4"	2-1/2"	6 #



FEMALE TO MALE REDUCER WYES

PART NO.	FEMALE	MALE	APPROX. WT.
A240879-1	8"	3" (X 2) +	14 #
A240879	8"	4" (X 2) +	14 #
A240879-2	8"	4" mnpt (X 2) +	13 #
A381185	8"	6" (X 2)	15 #



MALE COUPLER TO HOSE SHANK

PART NO.	MALE	HOSE I.D.	APPROX. WT.
A171150	2.5"	2.5"	3 #
A171340	3"	3"	3.5 #
A171140	4"	4"	4.5 #
A171160	6"	6"	7 #
A171312	8"	8"	22 #



FEMALE COUPLER TO HOSE SHANK

PART NO.	FEMALE	HOSE I.D.	APPROX. WT.
A171110 *	2.5"	2.5"	2 #
A171120 *	3"	3"	2.5 #
A170340 *	4"	4"	3.5 #
A171130 *	6"	6"	5.5 #
A381508 *	8"	6"	12 #
A171311 *	8"	8"	21 #

* O-Ring not included

ACCESSORIES



**MALE COUPLER TO
THREADED SHANK**

PART NO.	MALE	MALE NPT	APPROX. WT.
A171400	2.5"	2.5"	3.5 #
A171420	3"	3"	4.5 #
A171430	4"	4"	5.5 #
A170375	6"	6"	8 #



**FEMALE COUPLER TO
THREADED SHANK**

PART NO.	FEMALE	MALE NPT	APPROX. WT.
A171070 *	2.5"	2.5"	3 #
A171080 *	3"	3"	4 #
A171090 *	4"	4"	5 #
A380353 *	6"	6"	7.5 #

* O-Ring not included



**MALE NPT TO
HOSE SHANK**

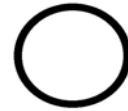
PART NO.	MALE NPT	HOSE I.D.	APPROX. WT.
02-0994	2.5"	2.5"	2 #
02-0998	3"	3"	2.5 #
02-1004	4"	4"	3.5 #
02-1019	6"	6"	8 #
02-1028	8"	8"	15 #



CAPS

PART NO.	FEMALE
A170290	2.5"
A170300	3"
A170310	4"
A170320M	6"
A170325MFD	8"

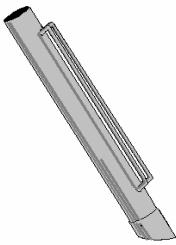
* O-Ring not included



O-RINGS

SIZE	PART NO.
2.5"	A190620
3"	A190630
4"	A190770
6"	A190760
8"	A191080

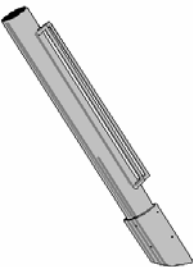
NOZZLES



UNIVERSAL NOZZLES

Part Number	Size	Length	Approx. Weight
U4811-0001	3"	42"	4.5 #
U7000-0037	4"	42"	5 #
U7000-0036	6"	42"	6 #

A versatile all-around nozzle. Sturdy aluminum construction.



GULPER NOZZLES

Part Number	Size	Length	Approx. Weight
U4811-0033	4"	48"	12 #
U4811-0034	6"	48"	10 #

Ideal nozzle for maximum material removal. Air breather sleeve allows uninterrupted flow of incoming air for continuous material removal. Aluminum construction.

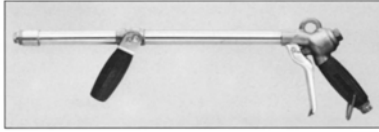


ACCESSORIES

MISCELLANEOUS ACCESSORIES

HAND GUN

Part Number	Name	Length	Approx. Weight
131632	Adjustable Hand Gun	24"	4 #



This exclusive handgun allows adjustment from a fine, broad spray to a pinpoint blast simply by moving the front grip forward and back. The trigger features "instant off" to help prevent misapplied water.

VACUUM TUBE HANDLE

Part Number	Name	Tube Size	Approx. Weight
244262	Vacuum Tube Handle	6"	7 #
244263		8"	7 #



Fits 8" & 6" aluminum suction tubes. Allows operator to have complete control of suction nozzle. Quick clamp and rubber gasket grip tightly without damage to tube. This user friendly device helps finish job in a fast, safe manner.

FILL HOSE & HYDRANT WRENCH

Part Number	Name	Length	Approx. Weight
176150	2-1/2" Diameter Fill Hose	25'	18 #
220330	Hydrant Wrench	18"	4 #



Hydrant hose is complete with national fire thread male and female swivel ends. The hydrant wrench is adjustable and fits most fire hydrants.